

Configuring your IDE for Dynamic Web Programming

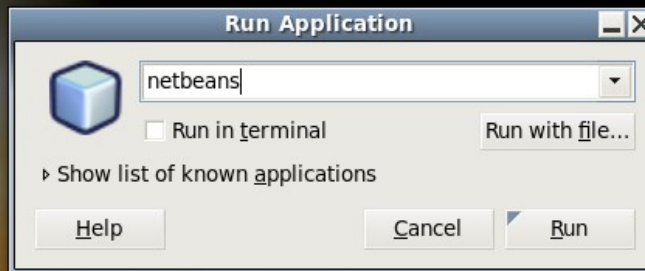
Phil Smith
21st November 2012

The IDEs

- Netbeans 6.9
- Eclipse *Helios*



Alt + F2



- Computer
- pxs697's Home
- Firefox
- Netbeans IDE
- Thunderbird
- Wastebasket



13 °C 14:53

Terminal
Command line



Computer



pxs697's Home



Firefox



Netbeans IDE



Thunderbird



Wastebasket



Terminal



13 °C 14:54



Computer



pxs697's Home



Firefox



Netbeans IDE



Thunderbird



Wastebasket

Terminal

File Edit View Search Terminal Help

Toolkit for platform not found
cca-1019% netbeans



Computer



pxs697's Home



Firefox



Netbeans IDE



Thunderbird



Wastebasket



NetBeans IDE

6.9

Starting modules...

NetBeans IDE and NetBeans Platform are based on software from netbeans.org, which has been dual licensed under the Common Development and Distribution License (CDDL) and the GNU General Public License version 2 with Classpath exception. For more information, please visit www.netbeans.org.

Files

- Projects
 - CMC
 - NaiveBayes
 - PhDBuddy**
 - shal
 - SSC2
 - SscExerciseClass
 - StanfordParser
 - StudentDB
 - WordNet#

Navigator

<No View Available>

New Project

Steps

1. Choose Project
2. ...

Choose Project

Categories:

- Java
- JavaFX
- Java Web**
- Java EE
- Java ME
- Maven
- PHP
- Ruby
- Groovy
- C/C++
- NetBeans Modules

Projects:

- Web Application**
- Web Application with Existing Sources
- Web Free-Form Application

Description:

Creates an empty Web application in a standard IDE project. A standard project uses an **IDE-generated build script** to build, run, and debug your project.

< Back Next > Finish Cancel Help

Files

- Projects
 - CMC
 - NaiveBayes
 - PhDBuddy**
 - shal
 - SSC2
 - SscExerciseClass
 - StanfordParser
 - StudentDB
 - WordNet#

Navigator

<No View Available>

New Web Application

Steps

1. Choose Project
- 2. Name and Location**
3. Server and Settings
4. Frameworks

Name and Location

Project Name:

Project Location:

Project Folder:

Use Dedicated Folder for Storing Libraries

Libraries Folder:

Different users and projects can share the same compilation libraries (see Help for details).

Set as Main Project

< Back Next > Finish Cancel Help

Files

- Projects
 - CMC
 - NaiveBayes
 - PhDBuddy**
 - shal
 - SSC2
 - SscExerciseClass
 - StanfordParser
 - StudentDB
 - WordNet#

Navigator

<No View Available>

New Web Application

Steps

1. Choose Project
2. Name and Location
- 3. Server and Settings**
4. Frameworks

Server and Settings

Add to Enterprise Application: <None>

Server: Apache Tomcat 6.0.26 Add...

Use dedicated library folder for server JAR files

Java EE Version: Java EE 5

Context Path: /LectureExample

< Back Next > Finish Cancel Help

Files

- Projects
- CMC
- NaiveBayes
- PhDBuddy**
- shal
- SSC2
- SscExerciseClass
- StanfordParser
- StudentDB
- WordNet#

Navigator

<No View Available>

New Web Application

Add Server Instance

Steps	Choose Server
1. Choose Server	Server: GlassFish Server 3
2. ...	GlassFish v1
	GlassFish v2.x
	GlassFish v3 Prelude
	JBoss Application Server
	Oracle WebLogic Server
	Sailfin v1 and v2
	Sun Java System Application Server 8.2
	Tomcat 5.0
	Tomcat 5.5
	Tomcat 6.0

Name: GlassFish Server 3

< Back Next > Finish Cancel Help

< Back Next > Finish Cancel Help

Files

- Projects
- CMC
- NaiveBayes
- PhDBuddy**
- shal
- SSC2
- SscExerciseClass
- StanfordParser
- StudentDB
- WordNet#

Navigator

<No View Available>

New Web Application

Add Server Instance

Steps	Server Location
1. Choose Server	Installation_Location:
2. Server Location	<input type="text" value="/tmp/GlassFish_Server_3"/> Browse...
3. Domain	Download Now... <input checked="" type="checkbox"/> I have read and accept the license agreement... (click)
3. Domain Name/Location	<p>/tmp/GlassFish_Server_3 does not exist but GlassFish Server 3 can be downloaded and installed there.</p>

< Back Next > Finish Cancel Help

< Back Next > Finish Cancel Help

Files

- Projects
 - CMC
 - NaiveBayes
 - PhDBuddy**
 - shal
 - SSC2
 - SscExerciseClass
 - StanfordParser
 - StudentDB
 - WordNet#

Navigator

<No View Available>

New Web Application

Steps	Server and Settings
1. Choose Project	Add to Enterprise Application: <None>
2. Name and Location	Server: Apache Tomcat 6.0.26 Add...
3. Server and Settings	<input type="checkbox"/> Use dedicated library folder for server JAR files
4. Frameworks	Java EE Version: Java EE 5
	Context Path: /LectureExample

< Back Next > Finish Cancel Help

Projects

- CMC
- LectureExample
 - Web Pages
 - META-INF
 - WEB-INF
 - index.jsp
 - Source Packages
 - Test Packages
 - Libraries
 - Test Libraries
 - Configuration Files
- NaiveBayes
- PhDBuddy
- shal
- SSC2
- SscExerciseClass
- StanfordParser

index.jsp - Navigator

- html
 - head
 - meta
 - title
 - body
 - h1

```
1 <!--
2 Document : index
3 Created on : 20-Nov-2012, 15:00:36
4 Author : pxs697
5 -->
6
7 <%@page contentType="text/html" pageEncoding="UTF-8"%>
8 <!DOCTYPE HTML PUBLIC "-//W3C//DTD HTML 4.01 Transitional//EN"
9 "http://www.w3.org/TR/html4/loose.dtd">
10
11 <html>
12 <head>
13 <meta http-equiv="Content-Type" content="text/html; charset=UTF-8">
14 <title>JSP Page</title>
15 </head>
16 <body>
17 <h1>Hello World!</h1>
18 </body>
19 </html>
20
```

Files

- Projects
 - CMC
 - LectureExample
 - Web Pages
 - META-INF
 - WEB-INF
 - index.jsp
 - Source Packages
 - Test Packages
 - Libraries
 - Test Libraries
 - Configuration Files
 - NaiveBayes
 - PhDBuddy
 - shal
 - SSC2
 - SscExerciseClass
 - StanfordParser

index.jsp - Navigator

- html
 - head
 - meta
 - title
 - body
 - h1

```

1  <!--
2      Document   : index
3      Created on : 20-Nov-2012, 15:00:36
4      Author    : pxs697
5  -->
6
7  <%@page contentType="text/html" pageEncoding="UTF-8"%>
8  <!DOCTYPE HTML PUBLIC "-//W3C//DTD HTML 4.01 Transitional//EN"
9      "http://www.w3.org/TR/html4/loose.dtd">
10
11 <html>
12 <head>
13 <meta http-equiv="Content-Type" content="text/html; charset=UTF-8">
14 <title>JSP Page</title>
15 </head>
16 <body>
17 <h1>Hello World!</h1>
18 </body>
19 </html>
20

```

Files

- Projects
 - CMC
 - LectureExample
 - Web Pages
 - META-INF
 - WEB-INF
 - index.jsp
 - Source Packages
 - Test Packages
 - Libraries
 - Test Libraries
 - Configuration Files
 - NaiveBayes
 - PhDBuddy
 - shal
 - SSC2
 - SscExerciseClass
 - StanfordParser

```

1 <!--
2   Document   : index
3   Created on : 20-Nov-2012, 15:00:36
4   Author    : pxs697
5 -->
6
7 <%@page contentType="text/html" pageEncoding="UTF-8"%>
8 <!DOCTYPE HTML PUBLIC "-//W3C//DTD HTML 4.01 Transitional//EN"
9   "http://www.w3.org/TR/html4/loose.dtd">
10
11 <html>
12 <head>
13   <meta http-equiv="Content-Type" content="text/html; charset=UTF-8">
14   <title>JSP Page</title>
15 </head>
16 <body>
17   <h1>Hello World!</h1>
18 </body>
19 </html>
20

```

Navigator

Output

LectureExample (run) x Apache Tomcat 6.0.26 Log x Apache Tomcat 6.0.26 x

```

20-Nov-2012 15:02:48 org.apache.catalina.core.AprLifecycleListener init
INFO: The APR based Apache Tomcat Native library which allows optimal performance in production environments was not found on the java.library.path:
20-Nov-2012 15:02:48 org.apache.coyote.http11.Http11Protocol init
INFO: Initializing Coyote HTTP/1.1 on http-8084
20-Nov-2012 15:02:48 org.apache.catalina.startup.Catalina load
INFO: Initialization processed in 467 ms
20-Nov-2012 15:02:48 org.apache.catalina.core.StandardService start
INFO: Starting service Catalina
20-Nov-2012 15:02:48 org.apache.catalina.core.StandardEngine start
INFO: Starting Servlet Engine: Apache Tomcat/6.0.26

```


Search (Ctrl+I)

Projects

- CMC
- LectureExample
 - Web Pages
 - META-INF
 - WEB-INF
 - index.jsp
 - Source Packages
 - Test Packages
 - Libraries
 - Test Libraries
 - Configuration Files
- NaiveBayes
- PhDBuddy
- shal
- SSC2
- SscExerciseClass
- StanfordParser

Navigator

<No View Available>

```
1 <!--
2   Document   : index
3   Created on : 20-Nov-2012, 15:00:36
4   Author    : pxs697
5 -->
6
7 <%@page contentType="text/html" pageEncoding="UTF-8"%>
8 <!DOCTYPE HTML PUBLIC "-//W3C//DTD HTML 4.01 Transitional//EN"
9   "http://www.w3.org/TR/html4/loose.dtd">
10
11 <html>
12 <head>
13   <meta http-equiv="Content-Type" content="text/html; charset=UTF-8">
14   <title>JSP Page</title>
15 </head>
16 <body>
17   <h1>Hello World!</h1>
18 </body>
19 </html>
20
```

HTTP Server Monitor

Request Cookies Session Context Client and Server Headers

All Records

- Current Records
 - GET LectureExample 15:02 20/1
 - GET favicon.ico 15:02 20/11/12]
 - GET favicon.ico 15:02 20/11/12]
- Saved Records

Request	
Request URI	/LectureExample/
Method	GET
Query string	
Protocol	HTTP/1.1
Client IP address	127.0.0.1
Scheme	http
HTTP exit status (as set by servlet)	Could not be determined

There was no query string

System tray icons: Firefox, Mail, Terminal, JSP Page - Mozilla Firefox, 13 °C, 15:04

Firefox window title: JSP Page - Mozilla Firefox

Firefox tabs: Firefox ▾ | JSP Page | +

Address bar: localhost:8084/LectureExample/ | ☆ | ↻ | Google | 🏠 | Bookmarks

Hello World!

LectureExample - NetBeans IDE 6.9

File Edit View Navigate Source Refactor Run Debug Profile Team Tools Window Help

Search (Ctrl+I)

Projects

- CMC
- LectureExample
 - Web Pages
 - META-INF
 - WEB-INF
 - index.jsp
 - Source Packages
 - Test Packages
 - Libraries
 - Test Libraries
 - Configuration Files
- NaiveBayes
- PhDBuddy
- shal
- SSC2
- SscExerciseClass
- StanfordParser

index.jsp - Navigator

- html
 - head
 - meta
 - title
 - body
 - h1

```

1 <!--
2   Document   : index
3   Created on : 20-Nov-2012, 15:00:36
4   Author    : pxs697
5 -->
6
7 <%@page contentType="text/html" pageEncoding="UTF-8"%>
8 <!DOCTYPE HTML PUBLIC "-//W3C//DTD HTML 4.01 Transitional//EN"
9   "http://www.w3.org/TR/html4/loose.dtd">
10
11 <html>
12 <head>
13   <meta http-equiv="Content-Type" content="text/html; charset=UTF-8">
14   <title>JSP Page</title>
15 </head>
16 <body>
17   <h1>Hello World!</h1>
18 </body>
19 </html>
20

```

HTTP Server Monitor

Output

LectureExample (run) x Apache Tomcat 6.0.26 Log x Apache Tomcat 6.0.26 x

```

20-Nov-2012 15:02:48 org.apache.catalina.core.AprLifecycleListener init
INFO: The APR based Apache Tomcat Native library which allows optimal performance in production environments was not found on the java.library.path:
20-Nov-2012 15:02:48 org.apache.coyote.http11.Http11Protocol init
INFO: Initializing Coyote HTTP/1.1 on http-8084
Stop the Server 15:02:48 org.apache.catalina.startup.Catalina load
INFO: Initialization processed in 467 ms
20-Nov-2012 15:02:48 org.apache.catalina.core.StandardService start
INFO: Starting service Catalina
20-Nov-2012 15:02:48 org.apache.catalina.core.StandardEngine start
INFO: Starting Servlet Engine: Apache Tomcat/6.0.26

```

Tasks Output Test Results

Files

- Projects
 - CMC
 - LectureExample
 - Web Pages
 - META-INF
 - context.xml
 - WEB-INF
 - web.xml
 - index.jsp
 - Source Packages
 - Test Packages
 - Libraries
 - Test Libraries
 - Configuration Files
 - MANIFEST.MF
 - context.xml
 - web.xml
 - NaiveBayes

```

1 <!--
2 Document : index
3 Created on : 20-Nov-2012, 15:00:36
4 Author : pxs697
  
```

New Servlet

Steps

- Choose File Type
- Name and Location**
- Configure Servlet Deployment

Name and Location

Class Name:

Project:

Location:

Package:

Created File:

< Back Next > Finish Cancel Help

LectureExample [Main] - Navig...

<No View Available>

All Records

- Current Records
 - GET LectureExample 15:02 20/1
 - GET favicon.ico 15:02 20/11/12]
 - GET favicon.ico 15:02 20/11/12]
- Saved Records

Request

Request URI	/LectureExample/
Method	GET
Query string	
Protocol	HTTP/1.1
Client IP address	127.0.0.1
Scheme	http
HTTP exit status (as set by servlet)	Could not be determined

There was no query string

Files

- Projects
 - CMC
 - LectureExample
 - Web Pages
 - META-INF
 - context.xml
 - WEB-INF
 - web.xml
 - index.jsp
 - Source Packages
 - Test Packages
 - Libraries
 - Test Libraries
 - Configuration Files
 - MANIFEST.MF
 - context.xml
 - web.xml
 - NaiveBayes

```

1 <%--
2 Document : index
3 Created on : 20-Nov-2012, 15:00:36
4 Author : pxs697
  
```

New Servlet

Steps

1. Choose File Type
2. Name and Location
3. **Configure Servlet Deployment**

Configure Servlet Deployment

Register the Servlet with the application by giving the Servlet an internal name (Servlet Name). Then specify patterns that identify the URLs that invoke the Servlet. Separate multiple patterns with commas.

Class Name:

Servlet Name:

URL Pattern(s):

Initialization Parameters:

Name	Value

< Back Next >

LectureExample [Main] - Navig...

<No View Available>

- All Records
- Current Records
 - GET LectureExample 15:02 20/11/12
 - GET favicon.ico 15:02 20/11/12]
 - GET favicon.ico 15:02 20/11/12]
- Saved Records

Request

Request URI	/LectureExample/
Method	GET
Query string	
Protocol	HTTP/1.1
Client IP address	127.0.0.1
Scheme	http
HTTP exit status (as set by servlet)	Could not be determined

There was no query string

LectureExample - NetBeans IDE 6.9

File Edit View Navigate Source Refactor Run Debug Profile Team Tools Window Help

Search (Ctrl+I)

Projects

- CMC
- LectureExample
 - Web Pages
 - META-INF
 - context.xml
 - WEB-INF
 - web.xml
 - index.jsp
 - Source Packages
 - students
 - HelloStudents.java
 - Test Packages
 - Libraries
 - Test Libraries
 - Configuration Files
 - MANIFEST.MF
 - context.xml

```

19 public class HelloStudents extends HttpServlet {
20
21     /**
22      * Processes requests for both HTTP <code>GET</code> and <code>POST</code> methods.
23      * @param request servlet request
24      * @param response servlet response
25      * @throws ServletException if a servlet-specific error occurs
26      * @throws IOException if an I/O error occurs
27      */
28     protected void processRequest(HttpServletRequest request, HttpServletResponse response)
29     throws ServletException, IOException {
30         response.setContentType("text/html;charset=UTF-8");
31         PrintWriter out = response.getWriter();
32         try {
33             out.println("<html>");
34             out.println("<head>");
35             out.println("<title>Servlet HelloStudents</title>");
36             out.println("</head>");
37             out.println("<body>");
38             out.println("<h1>Servlet HelloStudents at " + request.getContextPath () + "</h1>");
39             out.println("</body>");
40             out.println("</html>");
41         } finally {
42             out.close();
43         }
44     }
45
46     // <editor-fold defaultstate="collapsed" desc="HttpServlet methods. Click on the + sign on the left to edit
47     /**
48     * Handles the HTTP GET method.
49     */
50

```

processRequest - Navigator

Members View

- HelloStudents :: HttpServlet
 - doGet(HttpServletRequest request, HttpServletResponse response)
 - doPost(HttpServletRequest request, HttpServletResponse response)
 - getServletInfo() : String
 - processRequest(HttpServletRequest request, HttpServletResponse response)

HTTP Server Monitor

Request Cookies Session Context Client and Server Headers

All Records

Current Records

- GET LectureExample 15:02 20/11/12
- GET favicon.ico 15:02 20/11/12
- GET favicon.ico 15:02 20/11/12

Saved Records

Request	
Request URI	/LectureExample/
Method	GET
Query string	
Protocol	HTTP/1.1
Client IP address	127.0.0.1
Scheme	http
HTTP exit status (as set by servlet)	Could not be determined

There was no query string

Tasks Output Test Results

Files

- Projects
 - CMC
 - LectureExample
 - Web Pages
 - META-INF
 - context.xml
 - WEB-INF
 - web.xml
 - index.jsp
 - Source Packages
 - students
 - HelloStudents.java
 - Test Packages
 - Libraries
 - Test Libraries
 - Configuration Files
 - MANIFEST.MF
 - context.xml

```

19 public class HelloStudents extends HttpServlet {
20
21     /**
22      * Processes requests for both HTTP <code>GET</code> and <code>POST</code> methods.
23      * @param request servlet request
24      * @param response servlet response
25      * @throws ServletException if a servlet-specific error occurs
26      * @throws IOException if an I/O error occurs
27      */
28     protected void processRequest(HttpServletRequest request, HttpServletResponse response)
29     throws ServletException, IOException {
30         response.setContentType("text/html;charset=UTF-8");
31         PrintWriter out = response.getWriter();
32         try {
33             // TODO add your request processing code here
34
35             // Send the response back to the browser
36             out.print("Hello Students!");
37         } catch (Exception ex) {
38             out.print("An error occurred: " + ex.getMessage());
39         }
40     }
41
42     // <editor-fold defaultstate="collapsed" desc="HttpServlet methods. Click on the + sign on the left to edit
43     // the following code for: doGet(), doPost(), doPut(), doDelete(), doOptions(), doHead(), doTrace(), doPatch(),
44     // doPut(), doDelete(), doOptions(), doHead(), doTrace(), doPatch(), doPost(), doPut(), doDelete(), doOptions(), doHead(), doTrace(), doPatch(),
45     // doPut(), doDelete(), doOptions(), doHead(), doTrace(), doPatch(), doPost(), doPut(), doDelete(), doOptions(), doHead(), doTrace(), doPatch(),
46     // doPut(), doDelete(), doOptions(), doHead(), doTrace(), doPatch(), doPost(), doPut(), doDelete(), doOptions(), doHead(), doTrace(), doPatch(),
47     // doPut(), doDelete(), doOptions(), doHead(), doTrace(), doPatch(), doPost(), doPut(), doDelete(), doOptions(), doHead(), doTrace(), doPatch(),
48     // doPut(), doDelete(), doOptions(), doHead(), doTrace(), doPatch(), doPost(), doPut(), doDelete(), doOptions(), doHead(), doTrace(), doPatch(),
49     // doPut(), doDelete(), doOptions(), doHead(), doTrace(), doPatch(), doPost(), doPut(), doDelete(), doOptions(), doHead(), doTrace(), doPatch(),
50     // doPut(), doDelete(), doOptions(), doHead(), doTrace(), doPatch(), doPost(), doPut(), doDelete(), doOptions(), doHead(), doTrace(), doPatch(),
51     // doPut(), doDelete(), doOptions(), doHead(), doTrace(), doPatch(), doPost(), doPut(), doDelete(), doOptions(), doHead(), doTrace(), doPatch(),
52     // doPut(), doDelete(), doOptions(), doHead(), doTrace(), doPatch(), doPost(), doPut(), doDelete(), doOptions(), doHead(), doTrace(), doPatch(),
53     // doPut(), doDelete(), doOptions(), doHead(), doTrace(), doPatch(), doPost(), doPut(), doDelete(), doOptions(), doHead(), doTrace(), doPatch(),
54     // doPut(), doDelete(), doOptions(), doHead(), doTrace(), doPatch(), doPost(), doPut(), doDelete(), doOptions(), doHead(), doTrace(), doPatch(),
55     // doPut(), doDelete(), doOptions(), doHead(), doTrace(), doPatch(), doPost(), doPut(), doDelete(), doOptions(), doHead(), doTrace(), doPatch(),
56     // doPut(), doDelete(), doOptions(), doHead(), doTrace(), doPatch(), doPost(), doPut(), doDelete(), doOptions(), doHead(), doTrace(), doPatch(),
57     // doPut(), doDelete(), doOptions(), doHead(), doTrace(), doPatch(), doPost(), doPut(), doDelete(), doOptions(), doHead(), doTrace(), doPatch(),
58     // doPut(), doDelete(), doOptions(), doHead(), doTrace(), doPatch(), doPost(), doPut(), doDelete(), doOptions(), doHead(), doTrace(), doPatch(),
59     // doPut(), doDelete(), doOptions(), doHead(), doTrace(), doPatch(), doPost(), doPut(), doDelete(), doOptions(), doHead(), doTrace(), doPatch(),
60     // doPut(), doDelete(), doOptions(), doHead(), doTrace(), doPatch(), doPost(), doPut(), doDelete(), doOptions(), doHead(), doTrace(), doPatch(),
61     // doPut(), doDelete(), doOptions(), doHead(), doTrace(), doPatch(), doPost(), doPut(), doDelete(), doOptions(), doHead(), doTrace(), doPatch(),
62     // doPut(), doDelete(), doOptions(), doHead(), doTrace(), doPatch(), doPost(), doPut(), doDelete(), doOptions(), doHead(), doTrace(), doPatch(),
63     // doPut(), doDelete(), doOptions(), doHead(), doTrace(), doPatch(), doPost(), doPut(), doDelete(), doOptions(), doHead(), doTrace(), doPatch(),
64     // doPut(), doDelete(), doOptions(), doHead(), doTrace(), doPatch(), doPost(), doPut(), doDelete(), doOptions(), doHead(), doTrace(), doPatch(),
65     // doPut(), doDelete(), doOptions(), doHead(), doTrace(), doPatch(), doPost(), doPut(), doDelete(), doOptions(), doHead(), doTrace(), doPatch(),
66     // doPut(), doDelete(), doOptions(), doHead(), doTrace(), doPatch(), doPost(), doPut(), doDelete(), doOptions(), doHead(), doTrace(), doPatch(),
67     // doPut(), doDelete(), doOptions(), doHead(), doTrace(), doPatch(), doPost(), doPut(), doDelete(), doOptions(), doHead(), doTrace(), doPatch(),
68     // doPut(), doDelete(), doOptions(), doHead(), doTrace(), doPatch(), doPost(), doPut(), doDelete(), doOptions(), doHead(), doTrace(), doPatch(),
69     // doPut(), doDelete(), doOptions(), doHead(), doTrace(), doPatch(), doPost(), doPut(), doDelete(), doOptions(), doHead(), doTrace(), doPatch(),
70     // doPut(), doDelete(), doOptions(), doHead(), doTrace(), doPatch(), doPost(), doPut(), doDelete(), doOptions(), doHead(), doTrace(), doPatch(),
71     // doPut(), doDelete(), doOptions(), doHead(), doTrace(), doPatch(), doPost(), doPut(), doDelete(), doOptions(), doHead(), doTrace(), doPatch(),
72     // doPut(), doDelete(), doOptions(), doHead(), doTrace(), doPatch(), doPost(), doPut(), doDelete(), doOptions(), doHead(), doTrace(), doPatch(),
73     // doPut(), doDelete(), doOptions(), doHead(), doTrace(), doPatch(), doPost(), doPut(), doDelete(), doOptions(), doHead(), doTrace(), doPatch(),
74     // doPut(), doDelete(), doOptions(), doHead(), doTrace(), doPatch(), doPost(), doPut(), doDelete(), doOptions(), doHead(), doTrace(), doPatch(),
75     // doPut(), doDelete(), doOptions(), doHead(), doTrace(), doPatch(), doPost(), doPut(), doDelete(), doOptions(), doHead(), doTrace(), doPatch(),
76     // doPut(), doDelete(), doOptions(), doHead(), doTrace(), doPatch(), doPost(), doPut(), doDelete(), doOptions(), doHead(), doTrace(), doPatch(),
77     // doPut(), doDelete(), doOptions(), doHead(), doTrace(), doPatch(), doPost(), doPut(), doDelete(), doOptions(), doHead(), doTrace(), doPatch(),
78     // doPut(), doDelete(), doOptions(), doHead(), doTrace(), doPatch(), doPost(), doPut(), doDelete(), doOptions(), doHead(), doTrace(), doPatch(),
79     // doPut(), doDelete(), doOptions(), doHead(), doTrace(), doPatch(), doPost(), doPut(), doDelete(), doOptions(), doHead(), doTrace(), doPatch(),
80     // doPut(), doDelete(), doOptions(), doHead(), doTrace(), doPatch(), doPost(), doPut(), doDelete(), doOptions(), doHead(), doTrace(), doPatch(),
81     // doPut(), doDelete(), doOptions(), doHead(), doTrace(), doPatch(), doPost(), doPut(), doDelete(), doOptions(), doHead(), doTrace(), doPatch(),
82     // doPut(), doDelete(), doOptions(), doHead(), doTrace(), doPatch(), doPost(), doPut(), doDelete(), doOptions(), doHead(), doTrace(), doPatch(),
83     // doPut(), doDelete(), doOptions(), doHead(), doTrace(), doPatch(), doPost(), doPut(), doDelete(), doOptions(), doHead(), doTrace(), doPatch(),
84     // doPut(), doDelete(), doOptions(), doHead(), doTrace(), doPatch(), doPost(), doPut(), doDelete(), doOptions(), doHead(), doTrace(), doPatch(),
85     // doPut(), doDelete(), doOptions(), doHead(), doTrace(), doPatch(), doPost(), doPut(), doDelete(), doOptions(), doHead(), doTrace(), doPatch(),
86     // doPut(), doDelete(), doOptions(), doHead(), doTrace(), doPatch(), doPost(), doPut(), doDelete(), doOptions(), doHead(), doTrace(), doPatch(),
87     // doPut(), doDelete(), doOptions(), doHead(), doTrace(), doPatch(), doPost(), doPut(), doDelete(), doOptions(), doHead(), doTrace(), doPatch(),
88     // doPut(), doDelete(), doOptions(), doHead(), doTrace(), doPatch(), doPost(), doPut(), doDelete(), doOptions(), doHead(), doTrace(), doPatch(),
89     // doPut(), doDelete(), doOptions(), doHead(), doTrace(), doPatch(), doPost(), doPut(), doDelete(), doOptions(), doHead(), doTrace(), doPatch(),
90     // doPut(), doDelete(), doOptions(), doHead(), doTrace(), doPatch(), doPost(), doPut(), doDelete(), doOptions(), doHead(), doTrace(), doPatch(),
91     // doPut(), doDelete(), doOptions(), doHead(), doTrace(), doPatch(), doPost(), doPut(), doDelete(), doOptions(), doHead(), doTrace(), doPatch(),
92     // doPut(), doDelete(), doOptions(), doHead(), doTrace(), doPatch(), doPost(), doPut(), doDelete(), doOptions(), doHead(), doTrace(), doPatch(),
93     // doPut(), doDelete(), doOptions(), doHead(), doTrace(), doPatch(), doPost(), doPut(), doDelete(), doOptions(), doHead(), doTrace(), doPatch(),
94     // doPut(), doDelete(), doOptions(), doHead(), doTrace(), doPatch(), doPost(), doPut(), doDelete(), doOptions(), doHead(), doTrace(), doPatch(),
95     // doPut(), doDelete(), doOptions(), doHead(), doTrace(), doPatch(), doPost(), doPut(), doDelete(), doOptions(), doHead(), doTrace(), doPatch(),
96     // doPut(), doDelete(), doOptions(), doHead(), doTrace(), doPatch(), doPost(), doPut(), doDelete(), doOptions(), doHead(), doTrace(), doPatch(),
97     // doPut(), doDelete(), doOptions(), doHead(), doTrace(), doPatch(), doPost(), doPut(), doDelete(), doOptions(), doHead(), doTrace(), doPatch(),
98     // doPut(), doDelete(), doOptions(), doHead(), doTrace(), doPatch(), doPost(), doPut(), doDelete(), doOptions(), doHead(), doTrace(), doPatch(),
99     // doPut(), doDelete(), doOptions(), doHead(), doTrace(), doPatch(), doPost(), doPut(), doDelete(), doOptions(), doHead(), doTrace(), doPatch(),
100    // doPut(), doDelete(), doOptions(), doHead(), doTrace(), doPatch(), doPost(), doPut(), doDelete(), doOptions(), doHead(), doTrace(), doPatch(),

```

Set Servlet Execution URI

Select servlet execution URI, optionally add some request parameters :
e.g. /flowerServlet?flower=rose&color=red

OK Cancel

processRequest - Navigator

Members View

- HelloStudents :: HttpServlet
 - doGet(HttpServletRequest request, HttpServletResponse response)
 - doPost(HttpServletRequest request, HttpServletResponse response)
 - getServletInfo(): String
 - processRequest(HttpServletRequest request, HttpServletResponse response)

HTTP Server Monitor

Request Cookies Session Context Client and Server Headers

All Records

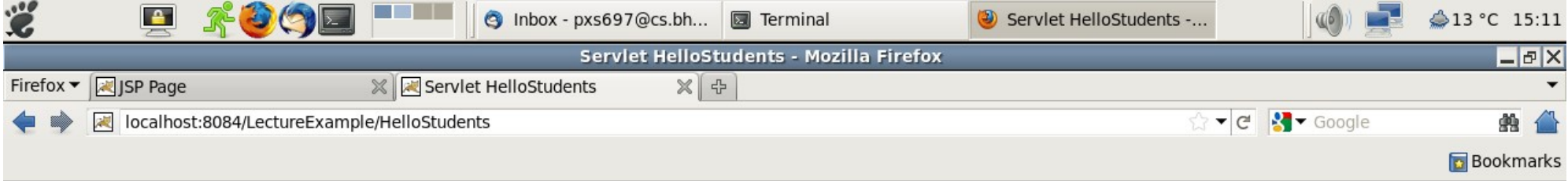
Current Records

- GET LectureExample 15:02 20/11/...
- GET favicon.ico 15:02 20/11/...
- GET favicon.ico 15:02 20/11/...
- GET LectureExample 15:11 20/11/...
- GET HelloStudents 15:11 20/11/...
- GET HelloStudents 15:12 20/11/...

Request

Request URI	/LectureExample/
Method	GET
Query string	
Protocol	HTTP/1.1
Client IP address	127.0.0.1
Scheme	http
HTTP exit status (as set by servlet)	Could not be determined

There was no query string



Servlet HelloStudents at /LectureExample

Search (Ctrl+I)

Projects

- CMC
- LectureExample
 - Web Pages
 - META-INF
 - context.xml
 - WEB-INF
 - web.xml
 - index.jsp
 - Source Packages
 - students
 - HelloStudents.java
 - Test Packages
 - Libraries
 - Test Libraries
 - Configuration Files
 - MANIFEST.MF
 - context.xml

```

19 public class HelloStudents extends HttpServlet {
20
21     /**
22      * Processes requests for both HTTP GET and POST methods.
23      * @param request HttpServletRequest request
24      * @param response HttpServletResponse response
25      * @throws ServletException if a Servlet-specific error occurs
26      * @throws IOException if an I/O error occurs
27      */
28     protected void processRequest(HttpServletRequest request, HttpServletResponse response)
29     throws ServletException, IOException {
30         response.setContentType("text/html;charset=UTF-8");
31         PrintWriter out = response.getWriter();
32         try {
33
34             out.println("<html>");
35             out.println("<head>");
36             out.println("<title>Servlet HelloStudents</title>");
37             out.println("</head>");
38             out.println("<body>");
39             out.println("<h1>Servlet HelloStudents at " + request.getContextPath () + "</h1>");
40             String test = (String) request.getParameter("test");
41             out.println("<p>" + test);
42             out.println("</body>");
43             out.println("</html>");
44
45         } finally {
46             out.close();
47         }
48     }
49
50     // ...

```

processRequest - Navigator

Members View

- HelloStudents :: HttpServlet
 - doGet(HttpServletRequest request, HttpServletResponse response)
 - doPost(HttpServletRequest request, HttpServletResponse response)
 - getServletInfo() : String
 - processRequest(HttpServletRequest request, HttpServletResponse response)

HTTP Server Monitor

Request Cookies Session Context Client and Server Headers

All Records

Current Records

Request	
Request URI	/LectureExample/
Method	GET
Query string	
Protocol	HTTP/1.1
Client IP address	127.0.0.1
Scheme	http
HTTP exit status (as set by servlet)	Could not be determined

There was no query string

Projects

- CMC
- LectureExample
 - Web Pages
 - META-INF
 - context.xml
 - WEB-INF
 - web.xml
 - index.jsp
 - Source Packages
 - students
 - HelloStudents.java
 - Test Packages
 - Libraries
 - Test Libraries
 - Configuration Files
 - MANIFEST.MF
 - context.xml

```
19 public class HelloStudents extends HttpServlet {
20
21     /**
22      * Processes requests for both HTTP <code>GET</code> and <code>POST</code> methods.
23      * @param request servlet request
24      * @param response servlet response
25      * @throws ServletException if a servlet-specific error occurs
26      * @throws IOException if an I/O error occurs
27      */
28     protected void processRequest(HttpServletRequest request, HttpServletResponse response)
29     throws ServletException, IOException {
30         response.setContentType("text/html;charset=UTF-8");
31         PrintWriter out = response.getWriter();
32         try {
33             // TODO: your code here
34
35         } finally {
36             out.close();
37         }
38     }
39
40     // ...
41     private String getContextPath () + "</h1>";
42
43
44
45 } finally {
46     out.close();
47 }
48
49
50 // ...
51
```

Set Servlet Execution URI

Select servlet execution URI, optionally add some request parameters :
e.g. /flowerServlet?flower=rose&color=red

/HelloStudents?test=wow

OK Cancel

processRequest - Navigator

Members View

- HelloStudents :: HttpServlet
- doGet(HttpServletRequest request, HttpServletResponse response)
- doPost(HttpServletRequest request, HttpServletResponse response)
- getServletInfo() : String
- processRequest(HttpServletRequest request, HttpServletResponse response)

HTTP Server Monitor

Request Cookies Session Context Client and Server Headers

All Records

Current Records

- GET LectureExample 15:02 20/11/2011
- GET favicon.ico 15:02 20/11/2011
- GET favicon.ico 15:02 20/11/2011
- GET LectureExample 15:11 20/11/2011
- GET HelloStudents 15:11 20/11/2011
- GET HelloStudents 15:12 20/11/2011
- GET HelloStudents 15:21 20/11/2011

Request

Request URI	/LectureExample/
Method	GET
Query string	
Protocol	HTTP/1.1
Client IP address	127.0.0.1
Scheme	http
HTTP exit status (as set by servlet)	Could not be determined

There was no query string

Servlet HelloStudents - Mozilla Firefox

Firefox | eclipse | eclipse | Servlet HelloStudents

localhost:8084/LectureExample/HelloStudents?test=wow

Google

Bookmarks

Servlet HelloStudents at /LectureExample

wow



(c) Copyright Eclipse contributors and others, 2000, 2009. All rights reserved. Java and all Java-related trademarks and logos are trademarks or registered trademarks of Sun Microsystems, Inc. in the U.S., other countries, or both. Eclipse is a trademark of the Eclipse Foundation, Inc.

Install

Available Software

Select a site or enter the location of a site.

Work with:

Find more software by working with the ["Available Software Sites"](#) preferences.

Name	Version
<input type="checkbox"/> ⓘ There is no site selected.	

Details

Show only the latest versions of available software Hide items that are already installed

Group items by category [What is already installed?](#)

Contact all update sites during install to find required software

File Edit View Inc

File Edit

Welcome

Slides

24

25

26

27

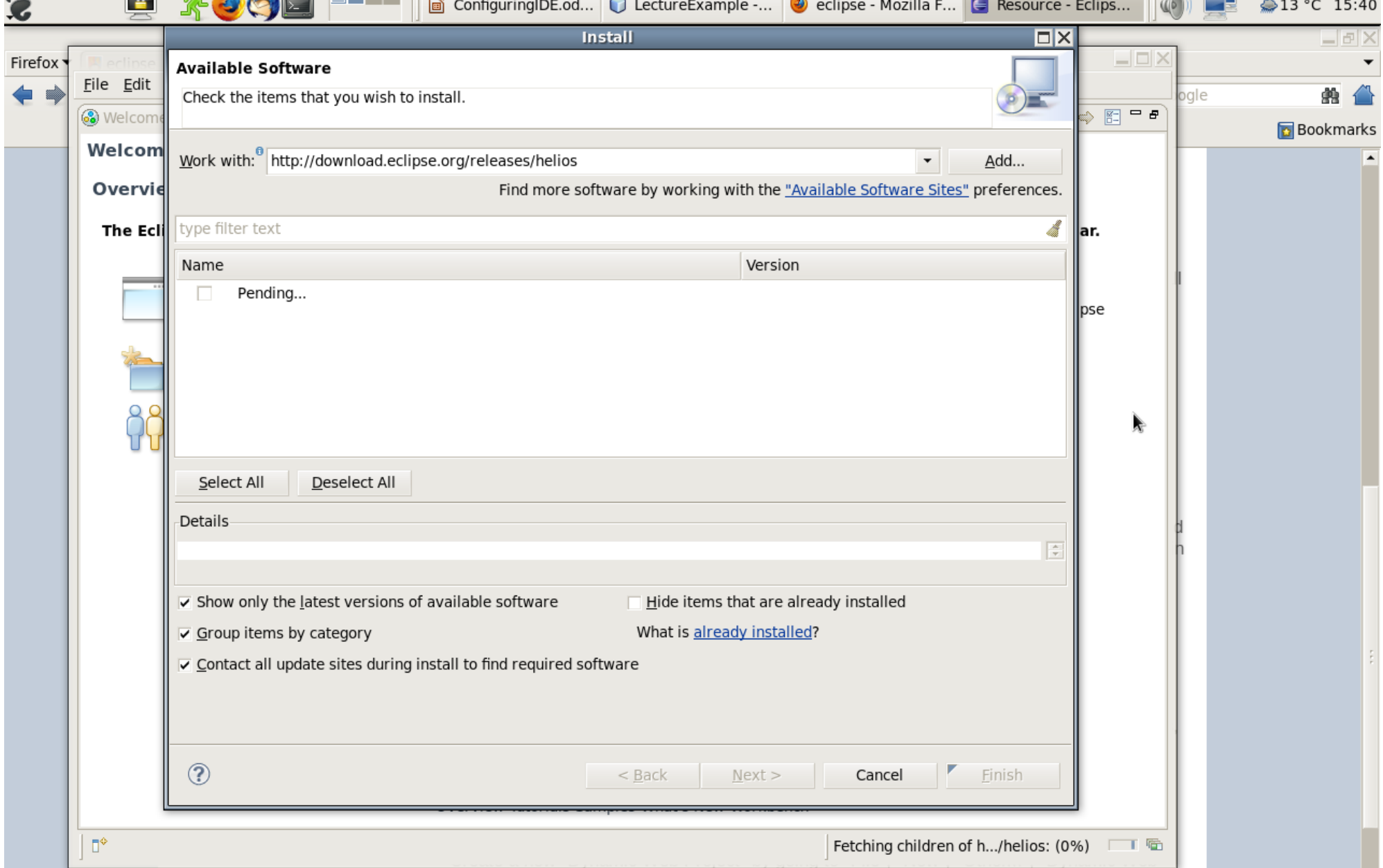
28

View

Pages

Layouts

- Table Design
- Custom Animation
- Slide Transition

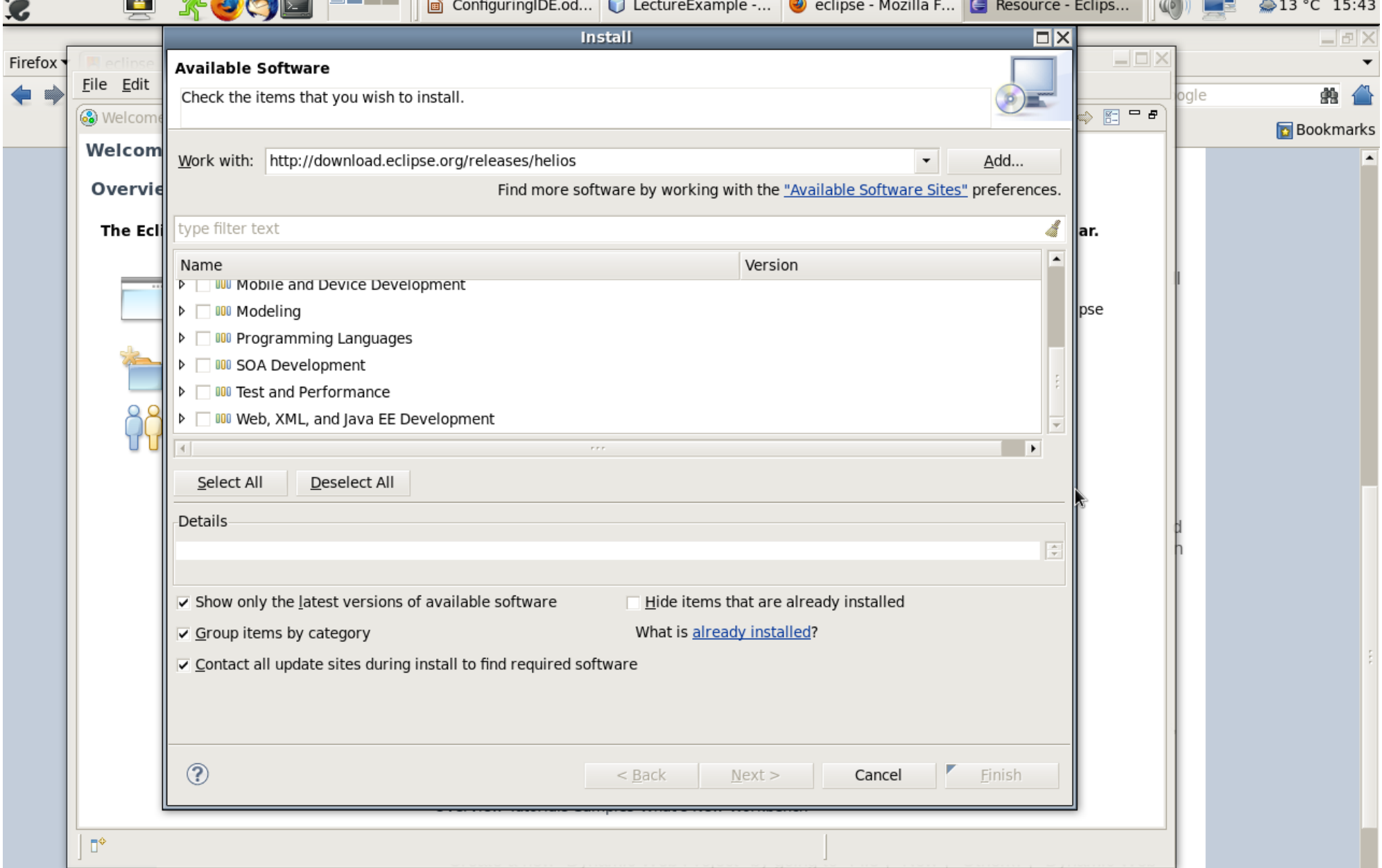


Project"

▪ Give the project a name. Select "New Runtime..." and choose Apache Tomcat. In the next window enter the folder where tomcat was downloaded e.g. /home/me/eclipse_ee/apache-tomcat-7.0.32. Click "Finish" on the create new project dialogue.

▪ NB: if you use any extra library code or JAR files e.g. mail.jar, you must add them to both the Build path and Deployment Assembly in your project properties.

Home use: use Eclipse Juno EE and install Tomcat



Project"

▪ Give the project a name. Select "New Runtime..." and choose Apache Tomcat. In the next window enter the folder where tomcat was downloaded e.g. /home/me/eclipse_ee/apache-tomcat-7.0.32. Click "Finish" on the create new project dialogue.

▪ NB: if you use any extra library code or JAR files e.g. mail.jar, you must add them to both the Build path and Deployment Assembly in your project properties.

Home use: use Eclipse Juno EE and install Tomcat

Install

Available Software

Check the items that you wish to install.

Work with:

Find more software by working with the "[Available Software Sites](#)" preferences.

type filter text

Name	Version
<input checked="" type="checkbox"/> Eclipse Java EE Developer Tools	3.2.3.v201011031800-7b7GHfIFSK2WBRT6E1mcyFXGPnSh
<input checked="" type="checkbox"/> Eclipse Web Developer Tools	3.2.3.v201102160541-7O7CFbWEMf84qYjGDyP3DNEwcgFU
<input checked="" type="checkbox"/> Eclipse XML Editors and Tools	3.2.3.v201102160550-7H7AFUWDxumQJoi9ghcTb5YgkWEZ
<input type="checkbox"/> Eclipse XSL Developer Tools	1.1.3.v201102102045-7S7WFASFpS-21NUD58xfPVDTLR
<input type="checkbox"/> JavaScript Development Tools	1.2.3.v201102160540-7C78FGUF9JgLWNO2UCNqfa
<input checked="" type="checkbox"/> JavaServer Faces Tools (JSF) Project	3.2.3.v201101112207-7E7I7BF9JgLWPMz0VyDEHH
<input type="checkbox"/> JAX-WS DOM Tools	1.0.0.v201005241530-5--AkF7B77NBZBgBg
<input type="checkbox"/> JAX-WS Tools	1.0.1.v201008232129-7E777CF8NcjSSK-UBTwXn
<input type="checkbox"/> JST Server Adapters	3.2.3.v20110111-777HFGSCcNBDjBdHV4BA8
<input checked="" type="checkbox"/> JST Server Adapters	3.2.0.v201005241530-208Z7w31211419
<input checked="" type="checkbox"/> JST Server UI	3.2.2.v20100908-7A5FEi9xFc7RCJMToAIOJC43A
<input checked="" type="checkbox"/> JST Web UI	3.2.3.v201101262333-7F77FJ_C25TkfyypjHQuxNYsMrJ
<input type="checkbox"/> PHP Development Tools (PDT) SDK Feature	2.2.1.v20101001-2300-53184QAN4JBQgLYPWMLcXn6Na9Od
<input type="checkbox"/> Rich Client Platform (RCP) Tooling	3.2.3.v20110216-1041

8 items selected

Details

Server adapters for use with the JST server tools

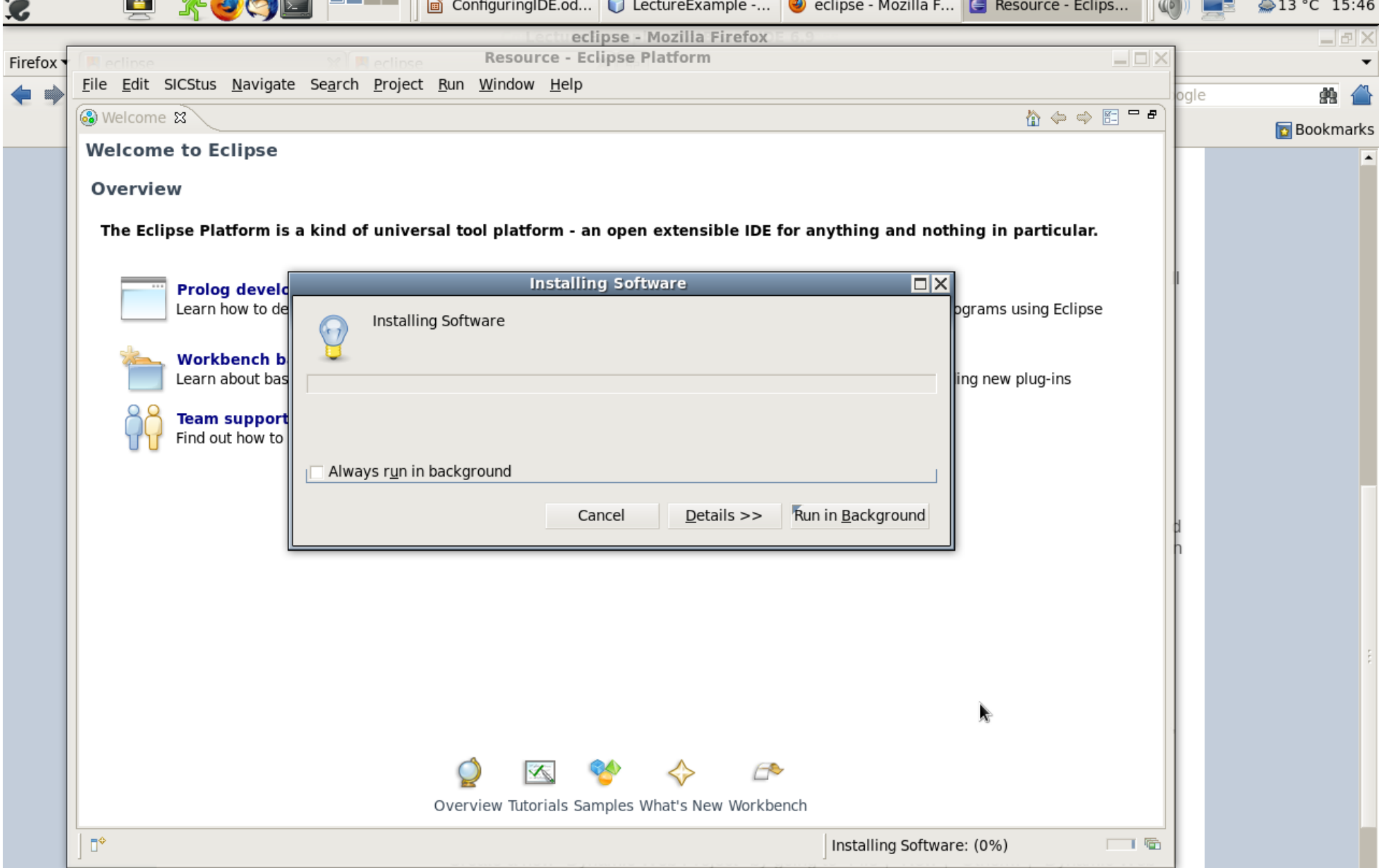
[More...](#)

Show only the latest versions of available software Hide items that are already installed

Group items by category What is [already installed](#)?

Contact all update sites during install to find required software

Home use: use Eclipse Juno EE and install Tomcat



Project"

" Give the project a name. Select "New Runtime..." and choose Apache Tomcat. In the next window enter the folder where tomcat was downloaded e.g. /home/me/eclipse_ee/apache-tomcat-7.0.32. Click "Finish" on the create new project dialogue.

" NB: if you use any extra library code or JAR files e.g. mail.jar, you must add them to both the Build path and Deployment Assembly in your project properties.

Home use: use Eclipse Juno EE and install Tomcat

Resource - Eclipse Platform

File Edit SICStus Navigate Search Project Run Window Help

Welcome

Welcome to Eclipse

Overview

The Eclipse Platform is a kind of universal tool platform - an open extensible IDE for anything and nothing in particular.


Prolog development
Learn how to develop Prolog programs with SICStus Prolog

Java development
Get familiar with developing Java programs using Eclipse

Workbench b
Learn about bas

Team support
Find out how to

Software Updates

 You will need to restart Eclipse Platform for the installation changes to take effect. You may try to apply the changes without restarting, but this may cause errors.

ing new plug-ins

Overview [Tutorials](#) [Samples](#) [What's New](#) [Workbench](#)

IAA Forum @IAA-Forum
Tonight at the IAA Forum: Ann Trenchard presents on Latin education in late modernity. CC @unibirmingham @UoBGradSchool twitpic.com/bevci4
Retweeted by UoB Graduate School
[View photo](#)

Salma Patel @salma_patel 1h
 Blog Post: This blog was listed in the Guardian HE Technology Blog List bit.ly/Qs5Top
Expand

Project Explorer

Outline

An outline is not available.

New

Select a wizard

Create a Dynamic Web project

Wizards:

type filter text

- Plug-in Development
- Prolog
- Server
- User Assistance
- Web
 - CSS File
 - Dynamic Web Project**
 - Filter

< Back Next > Cancel Finish

Tasks

0 items

✓	Description	Resource	Path	Location	Type
---	-------------	----------	------	----------	------

Project Explorer

Outline

An outline is not available.

New Server Runtime Environment

Define a new server runtime environment

[Download additional server adapters](#)

Select the type of runtime environment:

type filter text

- Apache Tomcat v3.2
- Apache Tomcat v4.0
- Apache Tomcat v4.1
- Apache Tomcat v5.0
- Apache Tomcat v5.5
- Apache Tomcat v6.0
- Apache Tomcat v7.0

Apache Tomcat v7.0 supports J2EE 1.2, 1.3, 1.4, and Java EE 5 and 6 Web modules.

Create a new local server

< Back Next > Cancel Finish

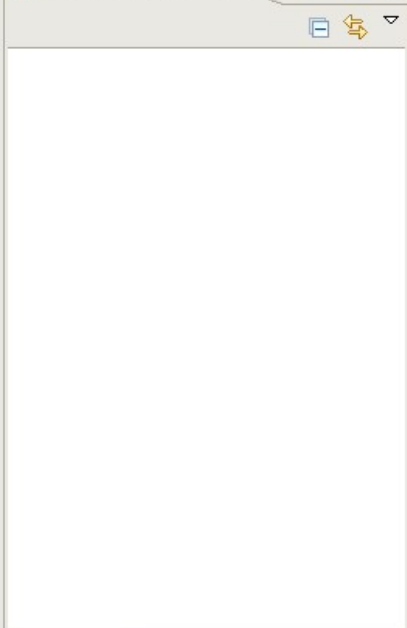
Add project to working sets

Working sets: Select...

< Back Next > Cancel Finish



Project Explorer



Outline

An outline is not available.

New Server Runtime Environment

Tomcat Server

Specify the installation directory

Name:
Apache Tomcat v7.0 (3)

Tomcat installation directory:
/tmp/eclipse/apache-tomcat-7.0.32 Browse...
Download and Install...

JRE:
Workbench default JRE Installed JREs...

? < Back Next > Cancel Finish

Add project to working sets

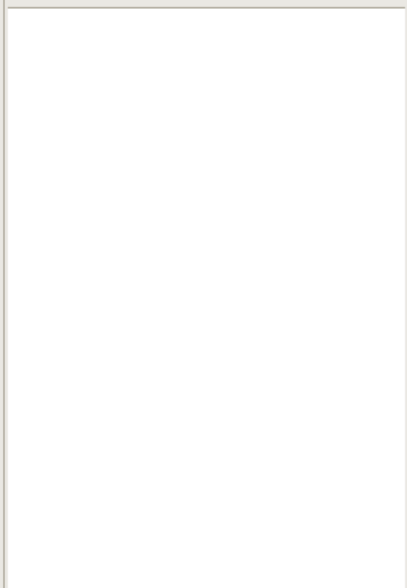
Working sets: Select...

? < Back Next > Cancel Finish

Tasks

0 items

Location	Type
----------	------



An outline is not available.

0 items

New Dynamic Web Project

Dynamic Web Project
Create a standalone Dynamic Web project or add it to a new or existing Enterprise Application.

Project name:

Project location
 Use default location
Location:

Target runtime

Dynamic web module version

Configuration

A good starting point for working with Apache Tomcat v7.0 runtime. Additional facets can later be installed to add new functionality to the project.

EAR membership
 Add project to an EAR
EAR project name:

Working sets
 Add project to working sets
Working sets:

Location	Type
----------	------



Project Explorer

WebApp

Main editor area (currently blank)

Outline

An outline is not available.

Markers Properties Servers Data Source Explorer Snippets



Project Explorer

- WebApp
 - Deployment Descriptor: WebApp
 - Java Resources
 - JavaScript Resources
 - build
 - WebContent

TestServlet.java

```
import java.io.IOException;

/**
 * Servlet implementation class TestServlet
 */
@WebServlet("/TestServlet")
public class TestServlet extends HttpServlet {
    private static final long serialVersionUID = 1L;

    /**
     * @see HttpServlet#HttpServlet()
     */
    public TestServlet() {
        super();
        // TODO Auto-generated constructor stub
    }

    /**
     * @see HttpServlet#doGet(HttpServletRequest request, HttpServletResponse response)
     */
    protected void doGet(HttpServletRequest request, HttpServletResponse response) {
        // TODO Auto-generated method stub
    }

    /**
     * @see HttpServlet#doPost(HttpServletRequest request, HttpServletResponse response)
     */
    protected void doPost(HttpServletRequest request, HttpServletResponse response) {
        // TODO Auto-generated method stub
    }
}
```

Outline

- import declarations
- TestServlet
 - serialVersionUID : long
 - TestServlet()
 - doGet(HttpServletRequest, HttpServletResponse)
 - doPost(HttpServletRequest, HttpServletResponse)

Markers Properties Servers Data Source Explorer Snippets

File Edit Source Refactor SICStus Navigate Search Project Run Window Help



Project Explorer

- Servers
- WebApp
 - Deployment Descriptor: WebApp
 - Context Parameters
 - Error Pages
 - Filter Mappings
 - Filters
 - Listeners
 - References
 - Servlet Mappings
 - /TestServlet -> TestServlet
 - Servlets
 - TestServlet
 - Welcome Pages
- Java Resources
 - src
 - (default package)
 - TestServlet.java
 - Libraries
 - JavaScript Resources
 - build
 - WebContent

```
TestServlet.java web.xml
...
 * @see HttpServlet#doGet(HttpServletRequest request, HttpServletResponse response)
 */
protected void doGet(HttpServletRequest request, HttpServletResponse response) throws ServletException, IOException {
    // TODO Auto-generated method stub
}

/**
 * @see HttpServlet#doPost(HttpServletRequest request, HttpServletResponse response)
 */
protected void doPost(HttpServletRequest request, HttpServletResponse response) throws ServletException, IOException {
    response.setContentType("text/html;charset=UTF-8");
    PrintWriter out = response.getWriter();
    try {
        out.println("<html>");
        out.println("<head>");
        out.println("<title>Servlet HelloStudents</title>");
        out.println("</head>");
        out.println("<body>");
        out.println("<h1>Servlet HelloStudents at " + request.getContextPath() + "</h1>");
        String test = (String) request.getParameter("test");
        out.println("<p> " + test);
        out.println("</body>");
        out.println("</html>");
    } finally {
        out.close();
    }
}
}
```

Outline

- import declarations
- TestServlet
 - serialVersionUID : long
 - TestServlet()
 - doGet(HttpServletRequest, HttpServletResponse)
 - doPost(HttpServletRequest, HttpServletResponse)

Markers Properties Servers Data Source Explorer Snippets Console

Tomcat v7.0 Server at localhost [Apache Tomcat] /usr/java/jdk1.6.0/bin/java (20 Nov 2012 16:16:14)

```
20-Nov-2012 16:16:16 org.apache.coyote.AbstractProtocol start
INFO: Starting ProtocolHandler ["http-bio-8080"]
20-Nov-2012 16:16:16 org.apache.coyote.AbstractProtocol start
INFO: Starting ProtocolHandler ["ajp-bio-8009"]
20-Nov-2012 16:16:16 org.apache.catalina.startup.Catalina start
INFO: Server startup in 398 ms
20-Nov-2012 16:17:26 org.apache.catalina.core.StandardContext reload
INFO: Reloading Context with name [/WebApp] has started
20-Nov-2012 16:17:26 org.apache.catalina.core.StandardContext reload
INFO: Reloading Context with name [/WebApp] is completed
```

Servlet HelloStudents at /WebApp

null